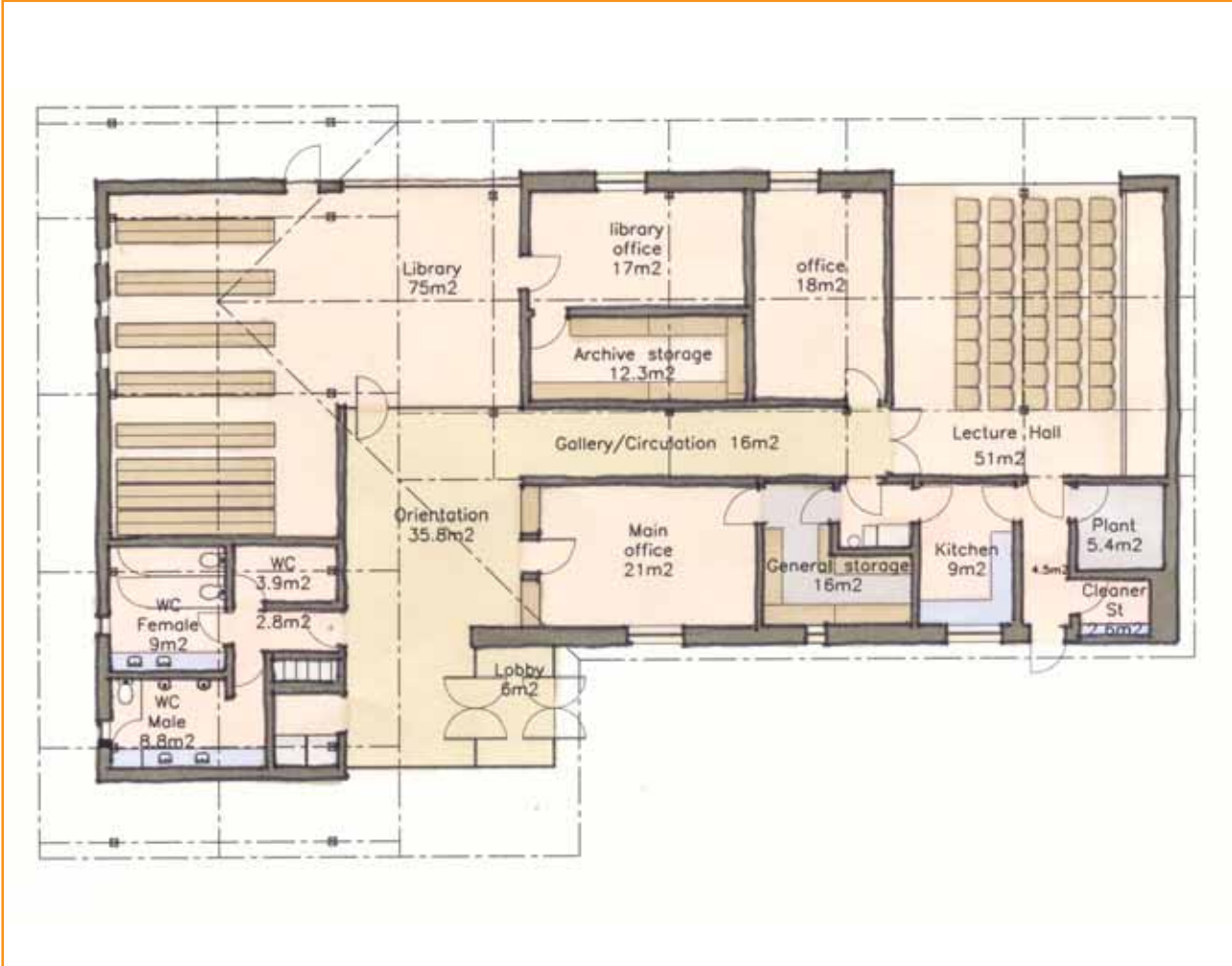


CASE STUDY
WATERSTON HOUSE







With thanks to Simpson & Brown Architects and Torquil Cramer for photography.

Timber technologies

This project is held as an exemplar for the use of Scottish timber in the construction industry.

The main structural frame is untreated green Douglas fir with traditional pegged and tenon jointing. The wall framing, sarking and battens are sitka spruce.

The wall cladding is untreated larch, and the flooring in the entrance and gallery space is oak, all home grown. The building also features hand-made and finished Douglas fir structural frames, doors and windows.

Most of the timber was sourced from Scotland and provided by the Forestry Commission Scotland.

Special timber-related features

The surrounding landscape has been specifically designed to encourage local bird life, and incorporates a pond which has varying water conditions, from fast moving to still, providing different habitats for the birds. The pond also acts as a storage reservoir for rainwater collected from the roof, and is integrated with the services strategy for the building.

CASE STUDY

WATERSTON HOUSE

Name of building

Waterston House
Scottish Ornithologists' Club Headquarters

Date completed

2005

Building type

Public

Location

Aberlady, East Lothian

Architect

Simpson & Brown Architects

Client

Scottish Ornithologists' Club

Main contractor / timber supplier

John Dennis & Co Ltd

Anticipated lifespan of building

100 + years

Background to building

Waterston House is the headquarters for the Scottish Ornithologists' Club and houses the most comprehensive ornithological library in Scotland. The new building adopts a simple form, designed to have minimal impact on its surroundings, and accommodates the library, a lecture hall/exhibition space, offices and archive storage.

Material Considerations

A Natural Factory

Forestry Commission Scotland

Silvan House
231 Corstorphine Road
Edinburgh EH12 7AT

+44 (0)845 367 3787

fcscotland@forestry.gsi.gov.uk

Sust.

Architecture + Design Scotland

The Lighthouse
11 Mitchell Lane
Glasgow G1 3NU

+44 (0)141 204 3635

info@sust.org
