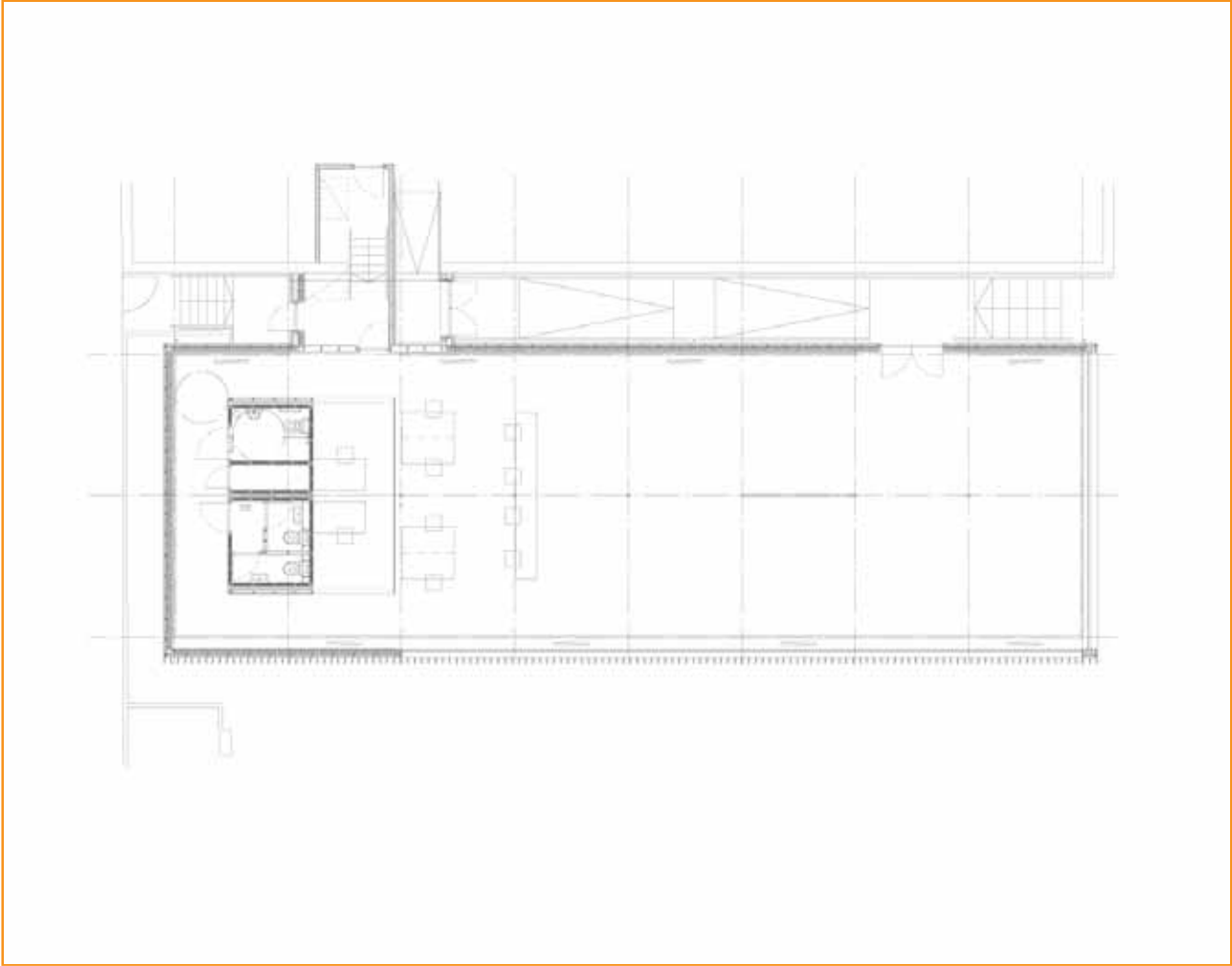


CASE STUDY
EAST END SAWMILLS







With thanks to NORD Architecture for photography.

Timber Technologies

The solid walls which flank the glazing are of insulated timber studwork, lined on the inside with 18mm oriented strand board (OSB), and on the outside with horizontal 18mm shiplap western red cedar boards. The floor and ceiling are OSB panels finished with a clear, fire-resistant coating.

Special timber-related features

All timber materials used in construction of the showroom and office space were sourced from the sawmill itself.

The structure has pairs of exposed standard prefabricated gang-nail trusses which run just inside the glazing, giving the building its unique identity.

CASE STUDY

EAST END SAWMILLS

Name of building

East End Sawmills office and showroom

Date completed

2006

Building type

Commercial

Location

Glasgow

Architect

NORD Architecture

Client

East End Sawmills Ltd

Main contractor / timber supplier

Bridgewater Group Ltd
Pasguill Rood Trusses Ltd
East End Sawmills

Anticipated lifespan of building

This temporary building of three years has now been demolished (2010)

Awards

Scottish Design Awards 2007,
Best Commercial Building

Background to building

In 2005 NORD Architecture was approached by East End Sawmills to provide an office and showroom facility to replace a previous building destroyed by fire. The main brief was to provide a structure that could be erected quickly, then dismantled and re-built on a different site, as the site location was in the path of the proposed M74 extension in Glasgow. The building proposal also required the use of wood products as much as possible.

The new showroom / reception is a 26.5 x 9 metre single storey extension on the south wall of the sawmills. It is designed and built from the premises' own timber and timber products. The facades are 'layered' to articulate the elements from which they are made up. The outer layer is a series of vertical western red cedar fins running in front of the glazed wall on the south-west elevation. During the day, these help to reduce solar gain and glare, and create a changing pattern of reflections inside. At night, they contribute to security and make an attractive screen through which the illuminated interior can be seen.

Material Considerations

A Natural Factory

Forestry Commission Scotland

Silvan House
231 Corstorphine Road
Edinburgh EH12 7AT

+44 (0)845 367 3787

fcscotland@forestry.gsi.gov.uk

Sust.

Architecture + Design Scotland

The Lighthouse
11 Mitchell Lane
Glasgow G1 3NU

+44 (0)141 204 3635

info@sust.org
